

SC 630 | SC 632  
SC 660 | SC 662

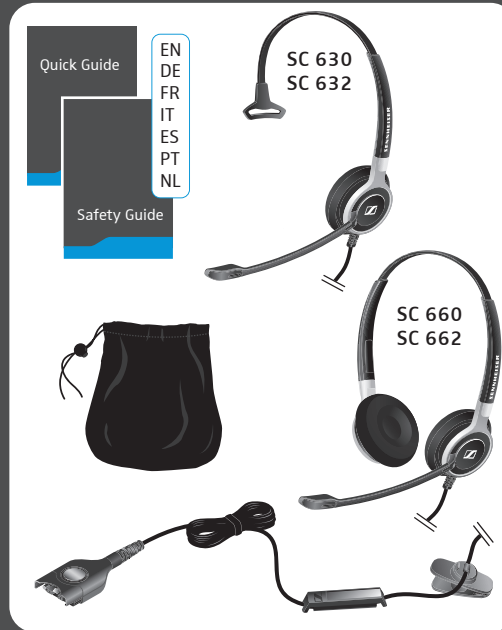


Quick Guide  
Kurzanleitung  
Guide rapide  
Guida rapida

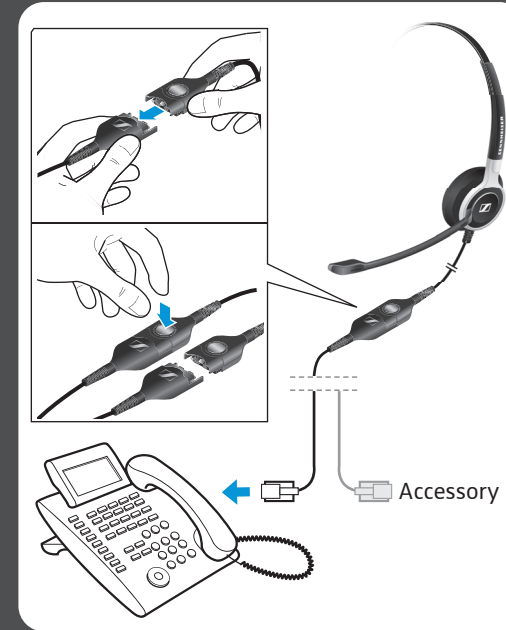
Instrucciones resumidas  
Guía rápido  
Beknopte handleiding



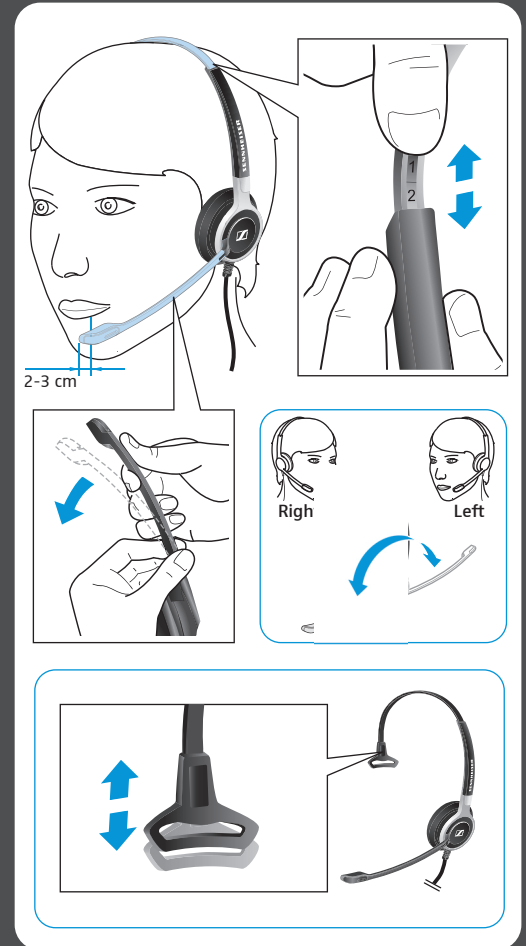
Delivery includes | Lieferumfang | Contenu |  
Dotazione | Volumen de suministro | Material  
fornecido | Omvang levering



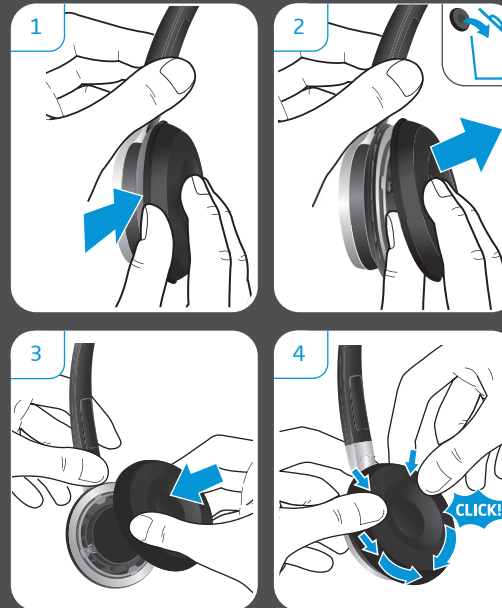
Connection possibilities | Anschlussmöglichkeiten |  
Possibilités de raccordement | Possibilità di collega-  
mento | Posibilidades de conexión | Ligações possíveis |  
Aansluitmogelijkheden



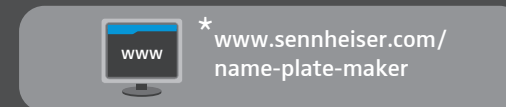
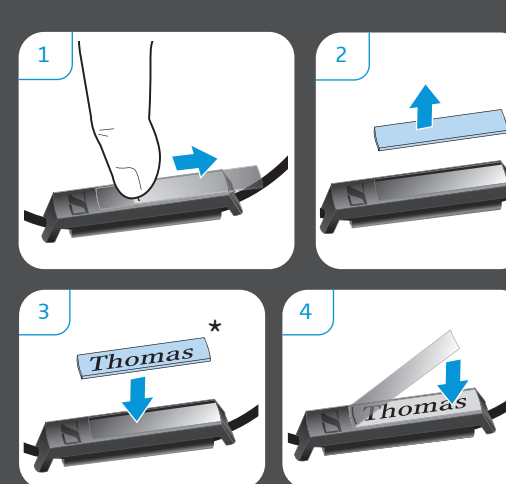
Wearing the headset | Headset aufsetzen | Mettre  
le casque-micro | Indossare l'headset | Ponerse el  
headset | Colocar o micro-auscultador | Headset  
opzetten



Replacing the ear pad | Ohrpolster austauschen |  
Remplacer le coussinet d'oreille | Sostituzione dei  
cuscinetti auricolari | Cambiar las almohadillas |  
Substituir as almofadas | Oorkussen vervangen



Labeling the headset | Headset kennzeichnen |  
Marquer le casque-micro | Riconoscimento dell'headset |  
Marcar los auriculares con un nombre | Identificar  
o micro-auscultador | Headset markeren



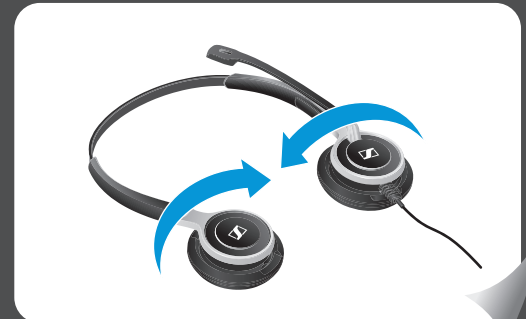
[www.sennheiser.com/cco/support](http://www.sennheiser.com/cco/support)



Sennheiser Communications A/S  
Industriparken 27, DK-2750 Ballerup, Denmark  
[www.sennheiser.com](http://www.sennheiser.com)

Printed in China, Publ. 05/14, A03

Transporting the headset | Headset transportieren |  
Transporter le casque-micro | Trasporto dell'headset |  
Transportar el headset | Transportar os  
micro-auscultadores | De headset transporteren



SC 630 | SC 632  
SC 660 | SC 662

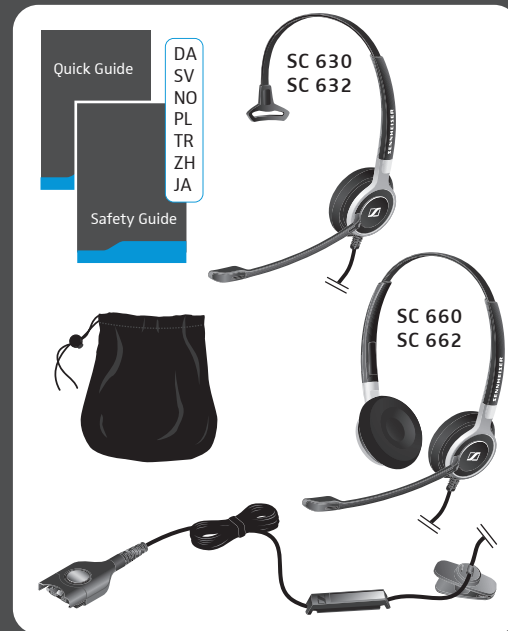


Quick Guide  
Snabbguide  
Quick Guide  
Krótka instrukcja  
obsługi

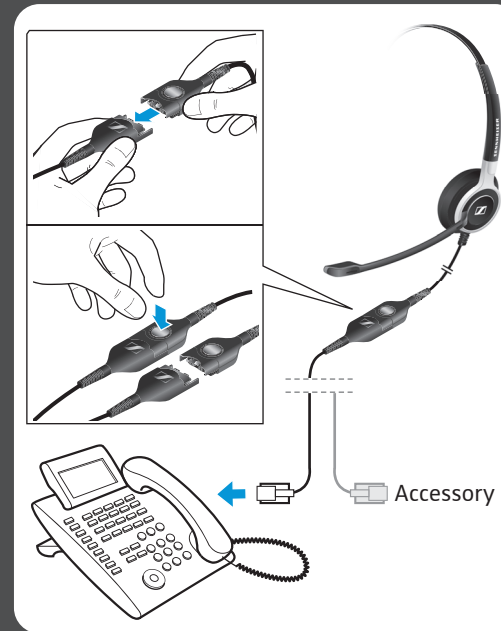
Hızlı Kılavuz  
快速指南  
クイックガイド



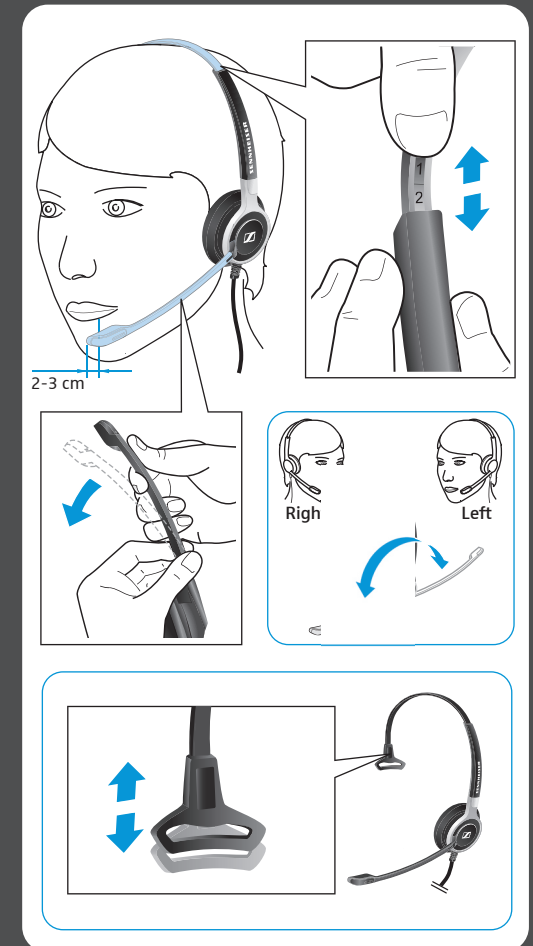
Leveringsomfang | Medfølgende delar | Leveranse-  
omfang | Zakres dostawy | Teslimat Kapsami |  
供货范围 | 同梱されているもの



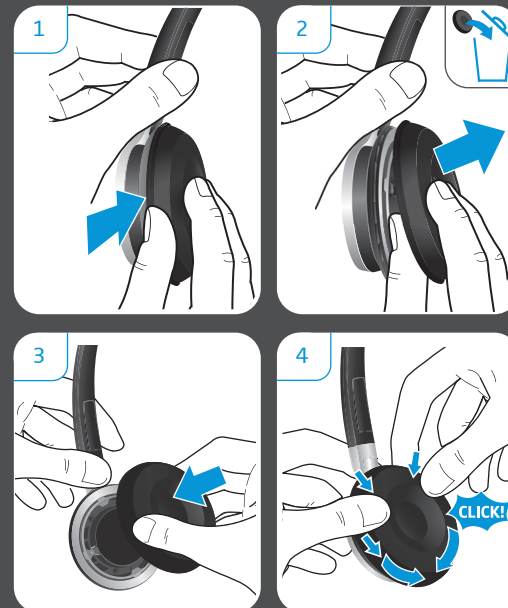
Tilslutningsmuligheder | Anslutning |  
Tilkoblingsmuligheter | Możliwości podłączenia |  
Bağlantı olanakları | 连通度 | 接続可能性



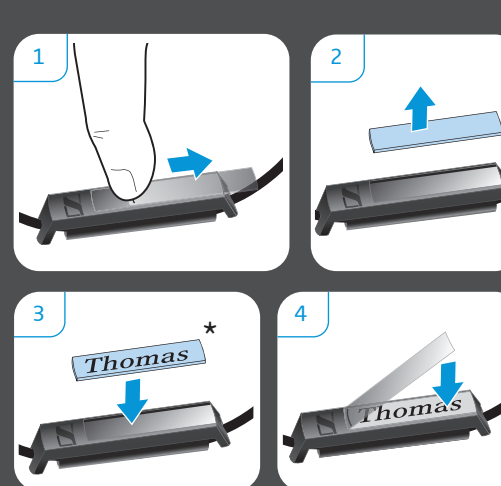
Brug af hovedsæt | Ta på headsetet | Sette på  
hodesettet | Zakładanie zestawu słuchawkowego |  
Kulaklığın takılması | 戴上耳机 | ヘッドセットを装着する



Udskiftning af ørepolstringer | Byta öronkuddar | Skifte  
ut øreputene | Wymiana poduszek słuchawkowych |  
Kulak yastığıının değiştirilmesi | 更換耳墊 | イヤーパッドを交換する



Identificering af hovedsættet | Märk headsetet |  
Merke hodesettet | Oznakowanie zestawu słuchawko-  
wego | Bağlantı olanakları |  
标记通讯耳机 | ヘッドセットにラベルを付ける



[www.sennheiser.com/cco/support](http://www.sennheiser.com/cco/support)



Sennheiser Communications A/S  
Industriparken 27, DK-2750 Ballerup, Denmark  
[www.sennheiser.com](http://www.sennheiser.com)

Printed in China, Publ. 05/14, A03

Transport af headset | Transportera headset |  
Transportere hodesettet | Transport zestawu słuchawkowego |  
Kulaklık setini taşıma |  
携帯耳机 | ヘッドセット輸送時

